



**MINERAL PROCESSING**  
A Member of MFL Group

## AFTER SALES

# PACKAGE

## CONCRETE MIXING PLANTS

# MINERAL PROCESSING PLANTS

# POWER PACKAGE

# CONVEYING

# 02

## POWER PACKAGE MADE IN AUSTRIA

---

Acting globally and committed to European quality – that's SBM and MFL. Technical know-how combined with 120 years of experience of both brands result in synergies used to find optimum solutions for our clients.

Our portfolio comprises manufacturing plants for raw materials and recycling industries and concrete mixing plants for ready-mixed and prefabricated concrete.



## ALL – AND EVEN MORE

---



Co-operating as partners with our clients warrants success. Our experts support you in every project stage with consultancy and implementation services – to ensure efficient and future-orientated solutions.

### Project Stages

- Consulting
- Design
- Planning
- Submission, approval
- Manufacture, delivery
- Assembly, start-up
- Training
- After sales service

# 04

## FROM ONE SINGLE HAND

---

The specialists of SBM plan, construct, and manufacture machines and plants for mineral processing plants and concrete mixing plants for ready-mixed and prefab concrete. Each plant is designed to optimally fulfil the respective process and processing conditions.







## Mineral Processing

- Crushing
- Classifying and screening
- Conveying and dosing
- Wet and dry processing
- Storage

## Concrete Mixing Plants

- Supermobile
- Mobile
- Stationary

# 06

## MINERAL PROCESSING Individual Machines

---

No matter if soft gypsum, hardest granite, strongly reinforced concrete or slag, we offer the perfect solution to every demand. In our in-house laboratory, we carry out petrophysical testings. Determining the characteristics of rock samples helps finding the optimum crusher and supports process optimisation.

### Crusher Types

- Single toggle jaw crushers
- Toggle jaw crushers
- Cone crushers
- Roll crushers
- Impact crushers
- Hard rock impact crushers
- Fine impact crushers
- Vertical impact crushers
- Hammer mills

### Applications

- Natural stone industry
- Production of sand and gravel
- Recycling of construction materials
- Slag processing
- Ore processing





In addition to crushing technology we offer a vast range of machines regarding classifying, conveying and wet processing providing the optimum machine for almost every requirement.



### Machine Types

- Vibrating grizzlies
- Screening machines
- Vibrating feeders
- Apron feeders
- Reciprocating feeders
- Dosing belts, conveyor belts
- Reclaimers
- Log washers
- Bucket wheels
- Sand traps
- Dewatering machines

# 08

## MINERAL PROCESSING Stationary Plants

---

Stationary overall concepts made by SBM are as unique as a finger print and as customised as a tailor-made suit. Based on a multitude of clients' requirements, our project engineers design the best solutions.

Material type, plant capacity, material feed size, final grain sizes, investment volume, operating expenses, environmental protection and safety – based on these issues we design and implement stationary turn-key plants.







### Value Added Chain

We offer comprehensive and integrated technological solutions and vast know-how concerning process engineering processes.

- Crushing
- Correcting the grain shape
- Classifying
- Screening
- Sorting
- Transport
- Washing
- Dewatering
- Water circuits
- Storage

# 10

## MINERAL PROCESSING Mobile Plants

---

Our mobile crushing and screening plants and conveyor systems are an investment for the future. Mobile solutions in the 20-ton to 160-ton weight classes are available for minor to major challenges. No matter if natural stones or recycling materials – we offer the perfect plant for every requirement and every material.



### Transport Versions

- Track-mounted (Dolly compatible)
- Wheel-mounted
- Semi-mobile
- Container-mobile

### Product Range

- Crushing – REMAX
- Screening – RESCREEN
- Conveying – MOBCON





## Efficient and Flexible

Thanks to the diesel-electric drive system, fuel consumption is essentially lower than with other drive systems. Using a change-over switch for generator or mains operation allows for mains operation. Additionally, an „inline production“ can be set up, e.g. a mobile screen can be driven directly via the generator of the crusher as well.

## Benefits

- Low operating costs
- Constant production
- High mobility
- Sturdy machinery
- Reliable operation
- Long lifetime
- Highest safety standards
- Short set-up times
- Environmentally friendly





# 12

## CONCRETE MIXING PLANTS Full Package Supplier

---

Efficient production of concrete at the highest possible level, flexibility, safety: these are the core aspects of our lasting value concrete mixing plants. The machines for prefab or ready-mixed concrete operate all over the world and meet all requirements to produce high-quality concrete fulfilling highest quality standards.



Supermobile, mobile or stationary: the one-stop supplier SBM offers the perfect solution to meet every requirement. Various “special editions” complete the product range and allow us to supply solutions to meet each and every demand. Modifications and expansions of existing plants belong to our scope of supply as well.

### Supermobile Plants

- EUROMIX®

### Mobile Plants

- EUROMIX®
- LINEMIX®
- VARIOMIX®

### Stationary Plants

- TOWERMIX®
- LINEMIX®



## Benefits

- High mobility
- Ready-for-operation unit
- Quick set-up
- Highest quality standards
- Economic concrete production
- Long working life
- Year-round operation
- Low investment risk
- Environmental protection

## Applications

- Tunnel construction
- Road building
- Power plant construction
- Wind energy
- Prefab concrete
- Infrastructure
- Industrial construction

# 14

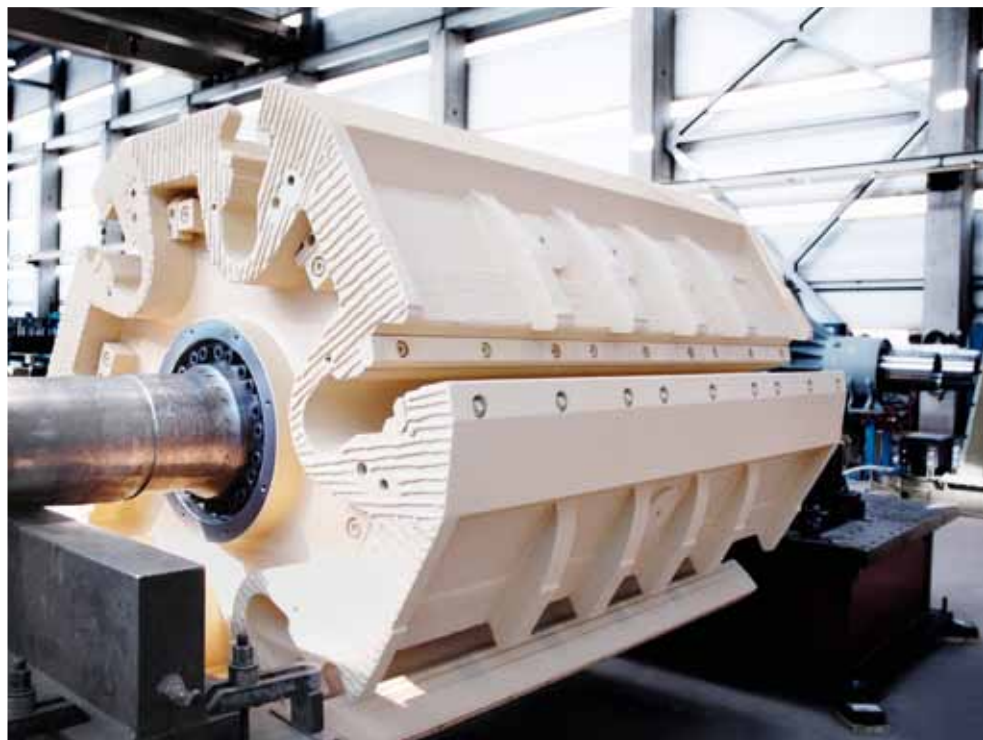
## AFTER SALES SERVICE

---

Quick and professional, that's how the SBM service team works for you. Service is more than a supplementary service to us. Strict quality criteria, customer satisfaction and individual solutions are of paramount importance.

### Competent Technical and Consulting Service

- Quick availability of parts
- High-quality spare and wear parts
- Castings made by the MFL Foundry
- Repair or new manufacture from a one-stop supplier
- Consultancy and implementation services to modernise plants made by us or other suppliers
- Technical service on site
- Training of staff and applications consultancy
- Service and maintenance contracts





## OUR POWERFUL PERFORMANCE

SBM with the brands SBM and MFL belongs to the powerful MFL Group represented by branch offices and distribution partners all over the world in more than 50 countries. The group's companies specialise in engineering, constructing and manufacturing machines, plants and components.

Central manufacturing takes place in the 220,000 m<sup>2</sup> large MFL company site in Liezen, Austria. In the field mechanical engineering, mineral processing plants and concrete mixing plants, sawing and milling plants, grinding plants for the cement industry, stranders, and plants to produce cement fibre products are manufactured.



© KREINERarchitektur ZT GmbH/Mirja Geh

### MFL Group

- Maschinenfabrik Liezen und Gießerei Ges.m.b.H.
- Christian Pfeiffer Maschinenfabrik GmbH
- SBM Mineral Processing GmbH
- Maschinenfabrik Liezen Faserzement-anlagen GesmbH
- Mali GesmbH
- Rabofsky + Partner Engineering GmbH
- Cut Technik Zuschnitt GmbH

CONVEYING MOBILE SCREENING CRUSHING STATIONARY

**MINERAL PROCESSING PLANTS**

MOBILE  
MOBILE

PREFAB CONCRETE

WET PROCESSING

CONVEYING STATIONARY  
CONVEYING **AFTER SALES**

CRUSHING

**POWER PACK**

MINERAL MOBILE READY-MIXED CONCRETE  
PROCESSING CRUSHING STATIONARY

**CONCRETE MIXING PLANTS**

PLANTS MOBILE PREFAB CONCRETE

**POWER  
PACKAGE**

CRUSHING CRUSHING CRUSHING  
MINERAL PROCESSING PLANTS

SCREENING

MINERAL PROCESSING PLANTS

WET PRO

CESSING

READY-MIXED CONO

STATIONARY CR

CONVEYIN

**WE ARE HERE  
TO HELP YOU  
WHENEVER YOU  
NEED US!**

SBM Mineral Processing GmbH  
Oberweis 401, 4664 Oberweis, Austria  
Tel.: +43 3612/2703-0  
office@sbm-mp.at  
[www.sbm-mp.at](http://www.sbm-mp.at)

Location Liezen, Manufacturing  
Werkstraße 5, 8940 Liezen, Austria

Technical modifications reserved, 04/2013